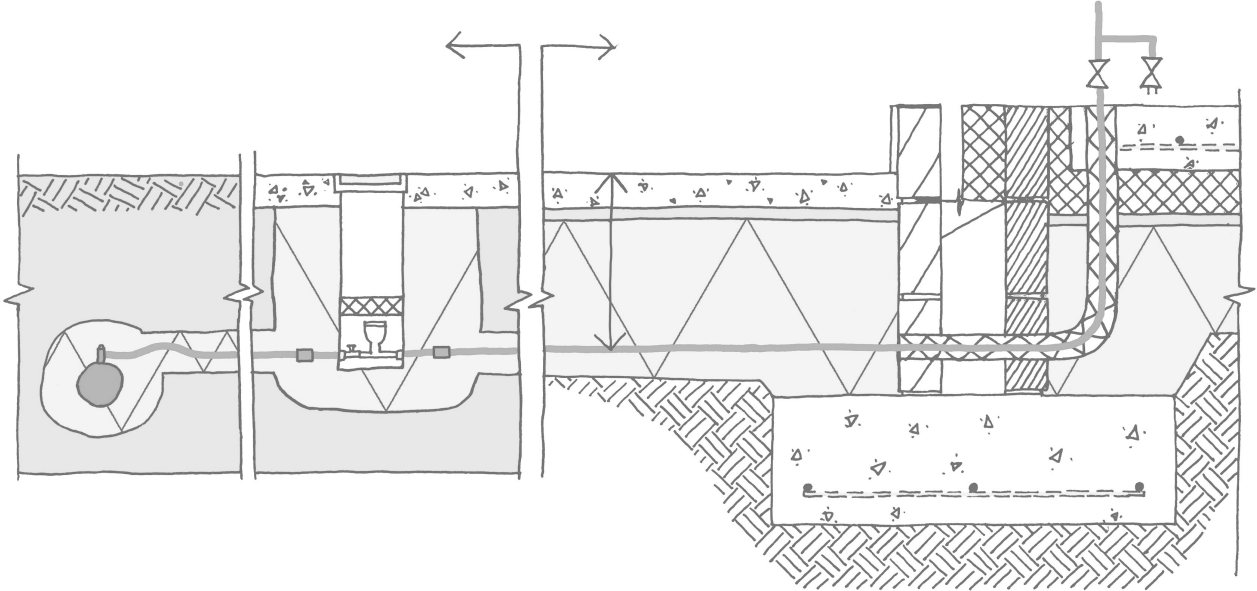


Chapter 28: Water Supply

1. Add colour (yellow - insulation/ blue - cold water supply) to the sketch shown below and label it.



2. List and explain the design criteria for a water supply system:

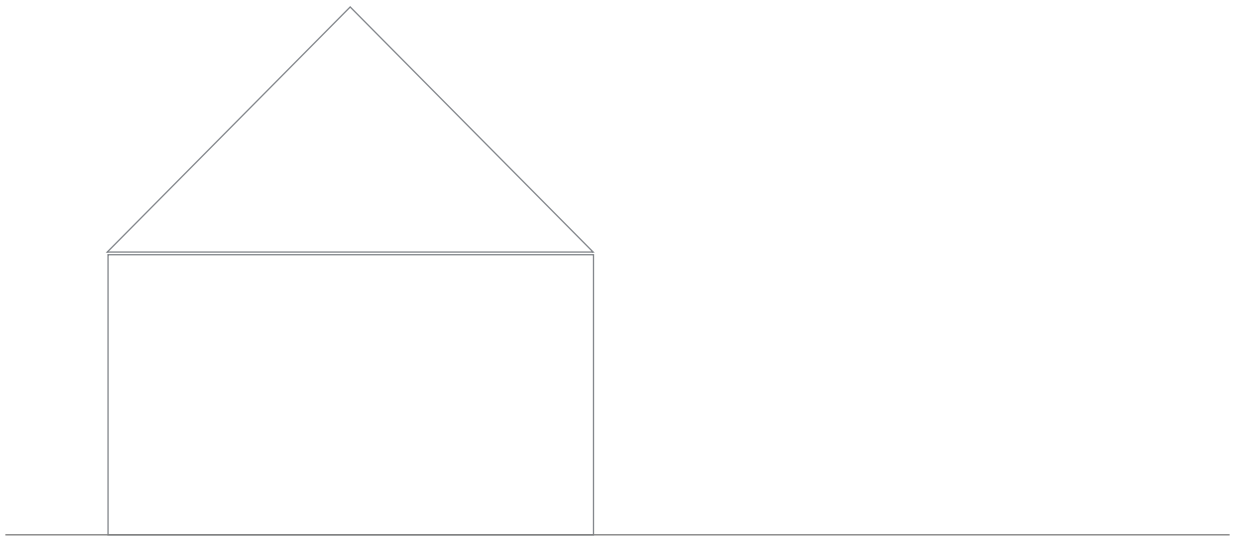
3. Outline three benefits of an indirect cold water supply system.

4. Generate a neat annotated sketch of a typical indirect cold water supply system:



5. Explain the purposes for which rainwater can and cannot be used in the home:

6. Generate a neat annotated sketch of a typical rainwater harvesting system:



7. Explain, using notes and a neat annotated sketch, how a condensing boiler works.

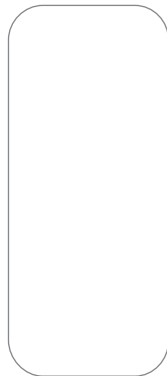
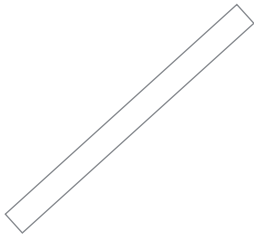
8. Explain, using notes and a neat annotated sketch, what is meant when timber is described as a 'carbon neutral' fuel?

9. Generate a neat annotated cross-sectional sketch showing a typical installation detail for a wood pellet boiler.

10. Generate a neat annotated sketch of a typical indirect hot water supply system: *(hint: see 28.13)*



11. Generate a neat annotated sketch of a space and hot water heating system for a Passivhaus.



12. Explain how this system works during the summer and winter.
